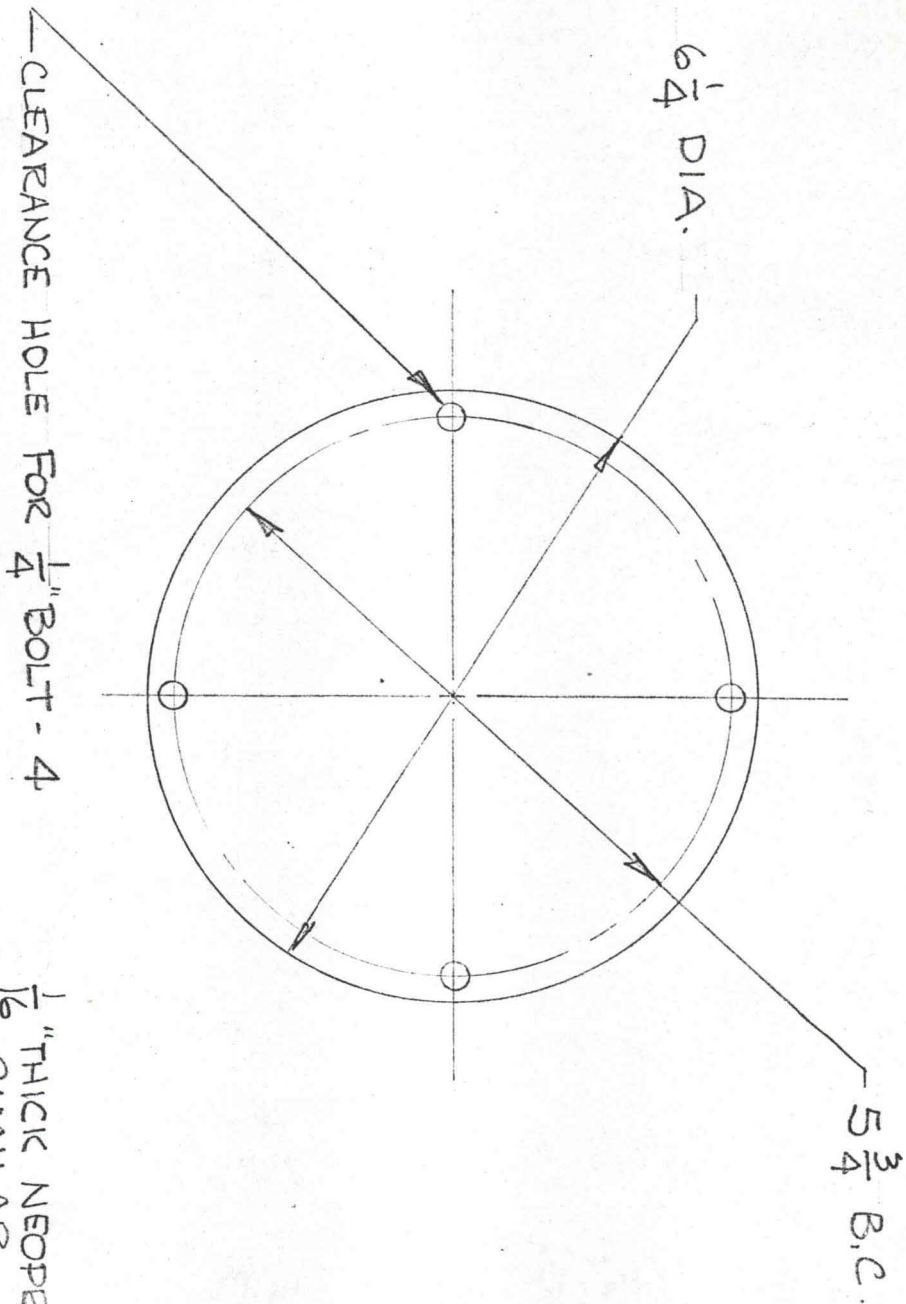


① BASE PLATE
 C.R.S.
 HALF SIZE

1 REQ'D.
 6-18-74



1/16" THICK NEOPRENE OR
 SIMILAR

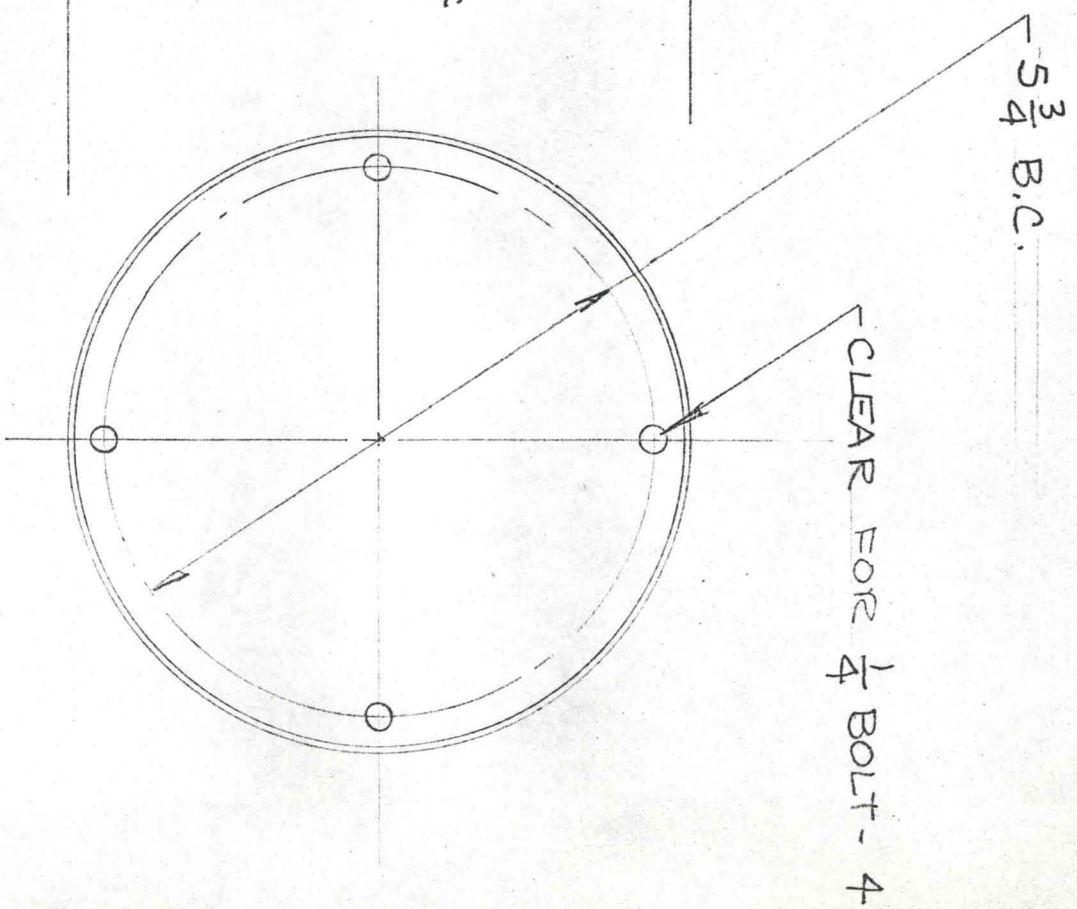
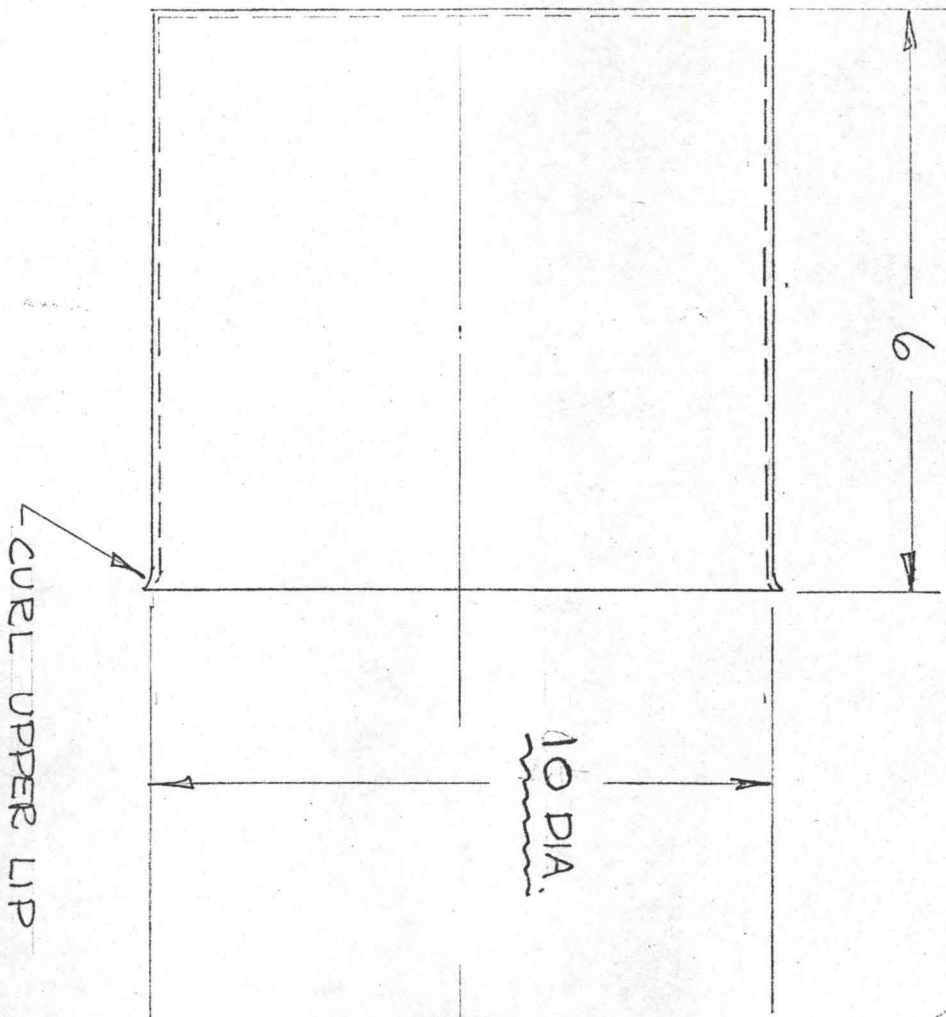
2

GASKET

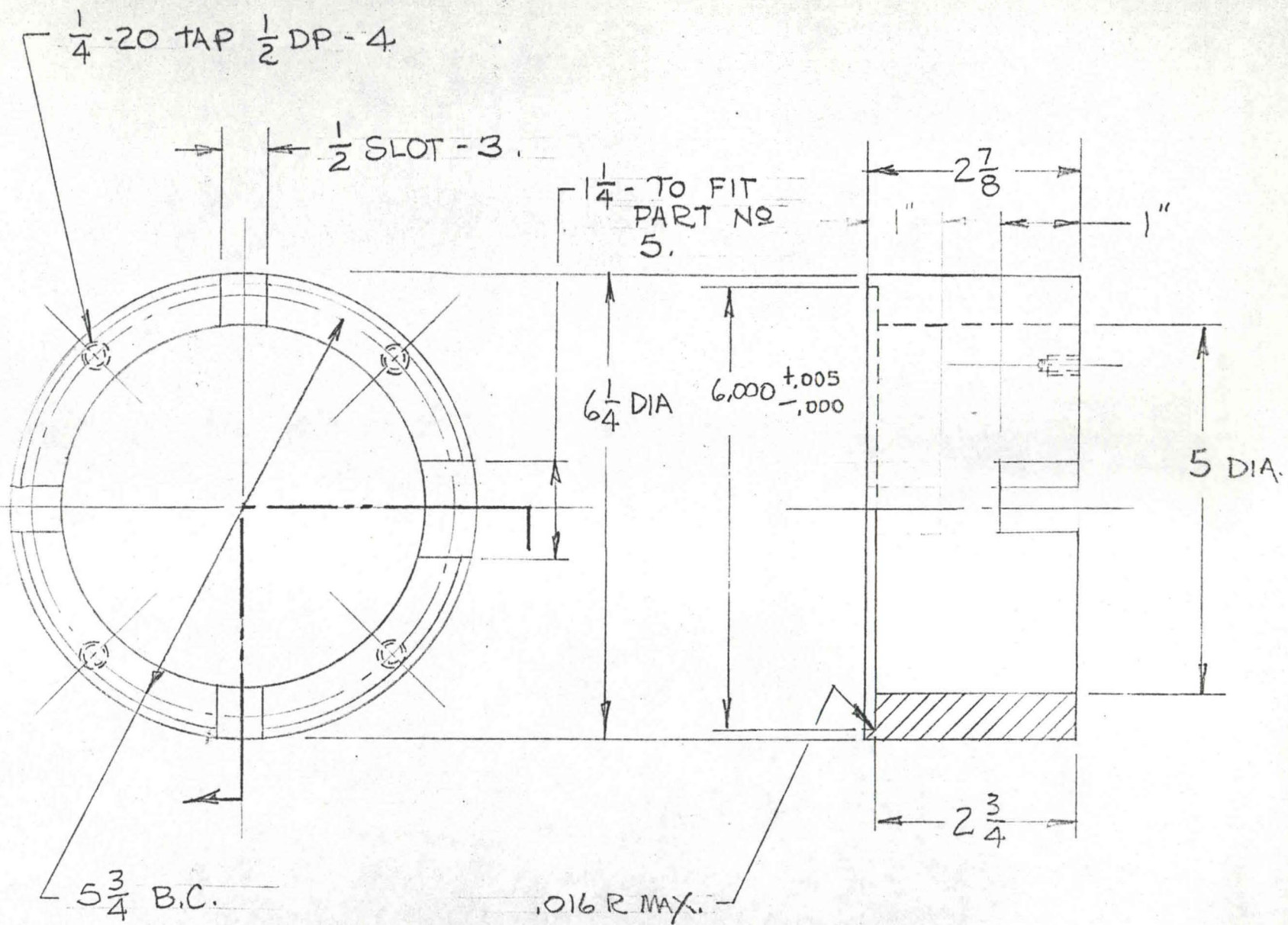
1 REQ'D.

HALF SIZE

6-18-74



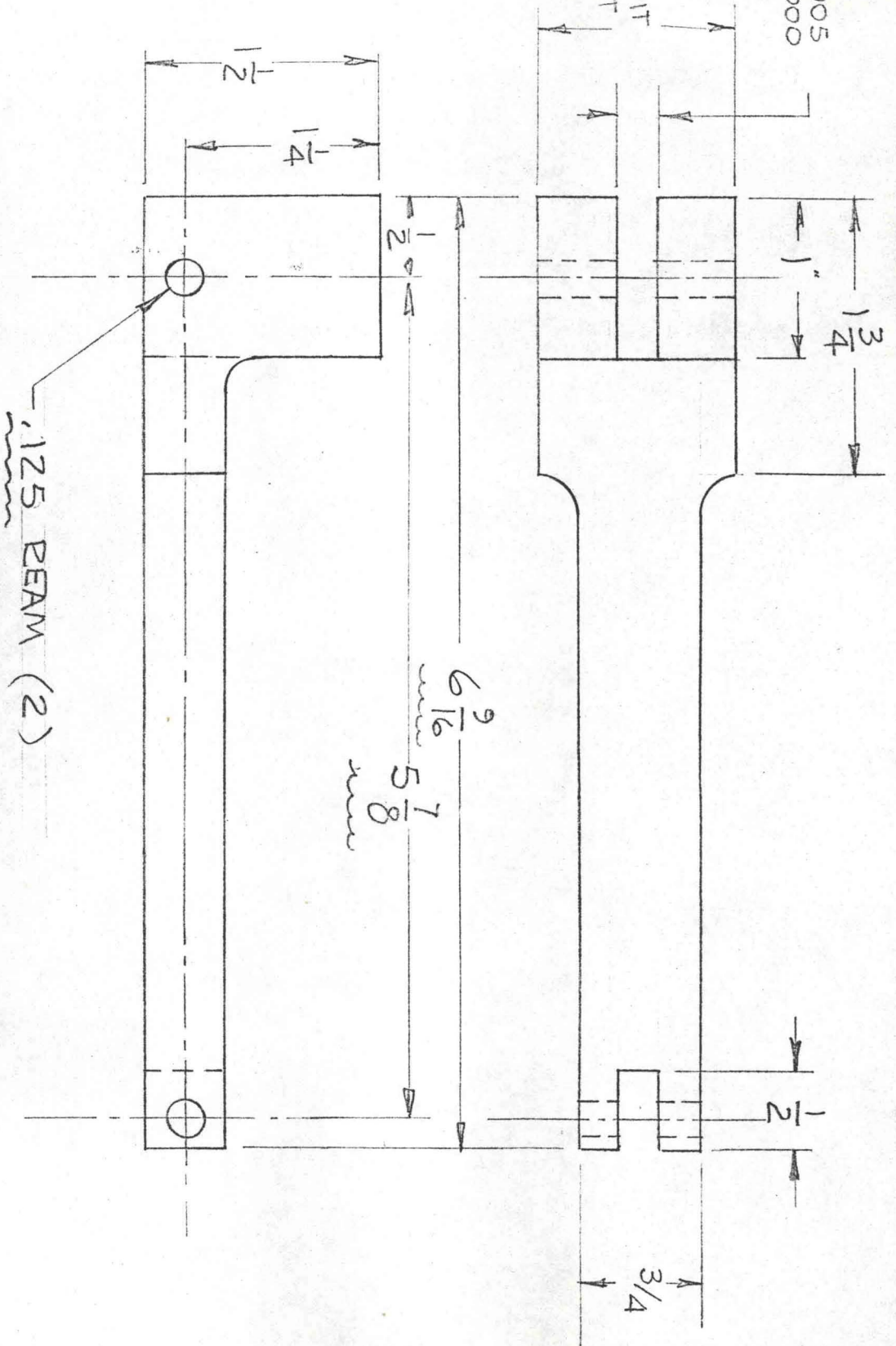
③ TANK SHEET STEEL REQ'D.
 1/2 GA. SHEET SIZE 6-18-74



(4) BASE CYLINDER 1 REQ'D
 STAINLESS STEEL
 HALF SIZE 6-18-74

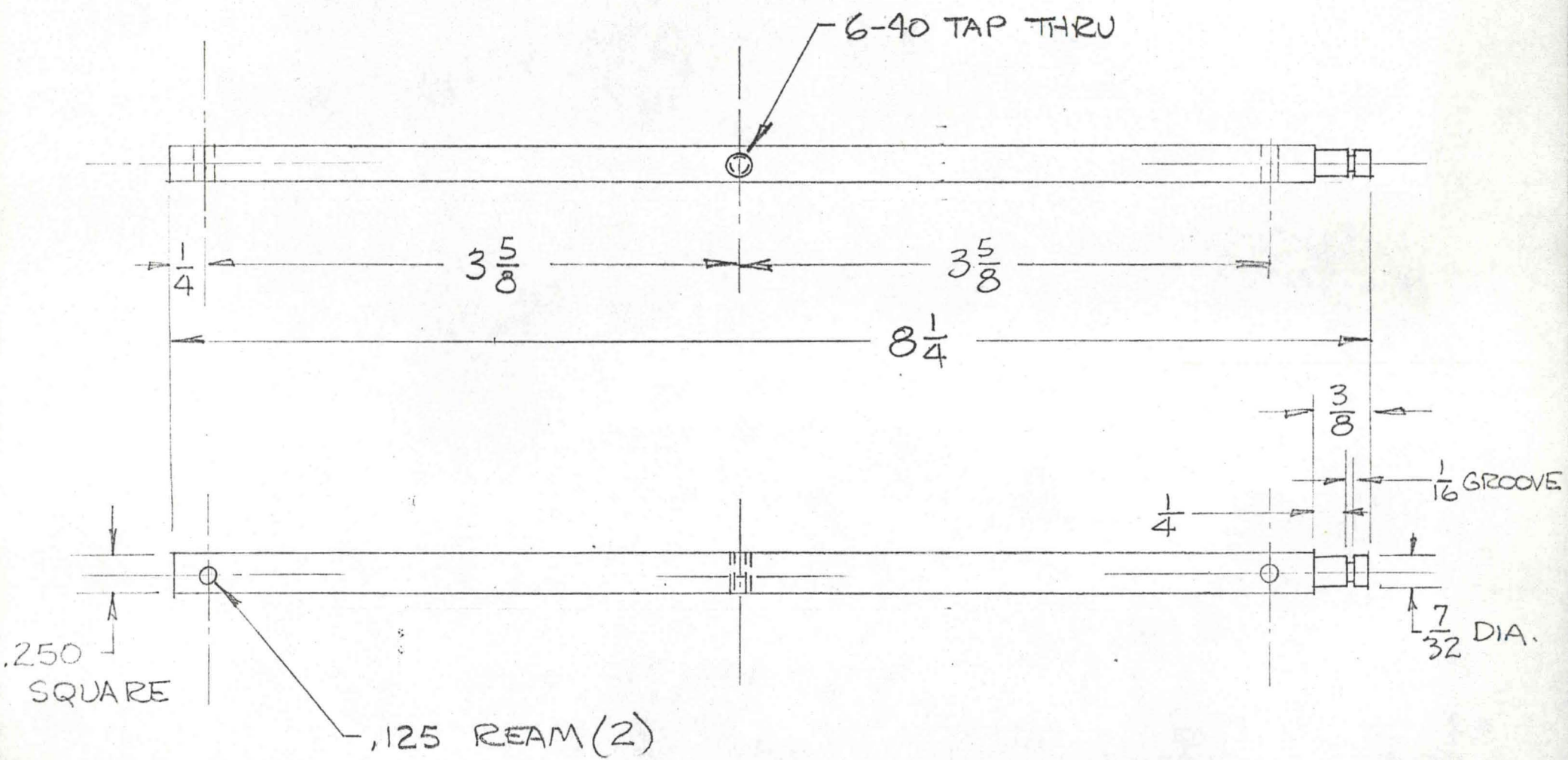
.250 \pm .005

1/4 - TO FIT
PART
NO. 4.

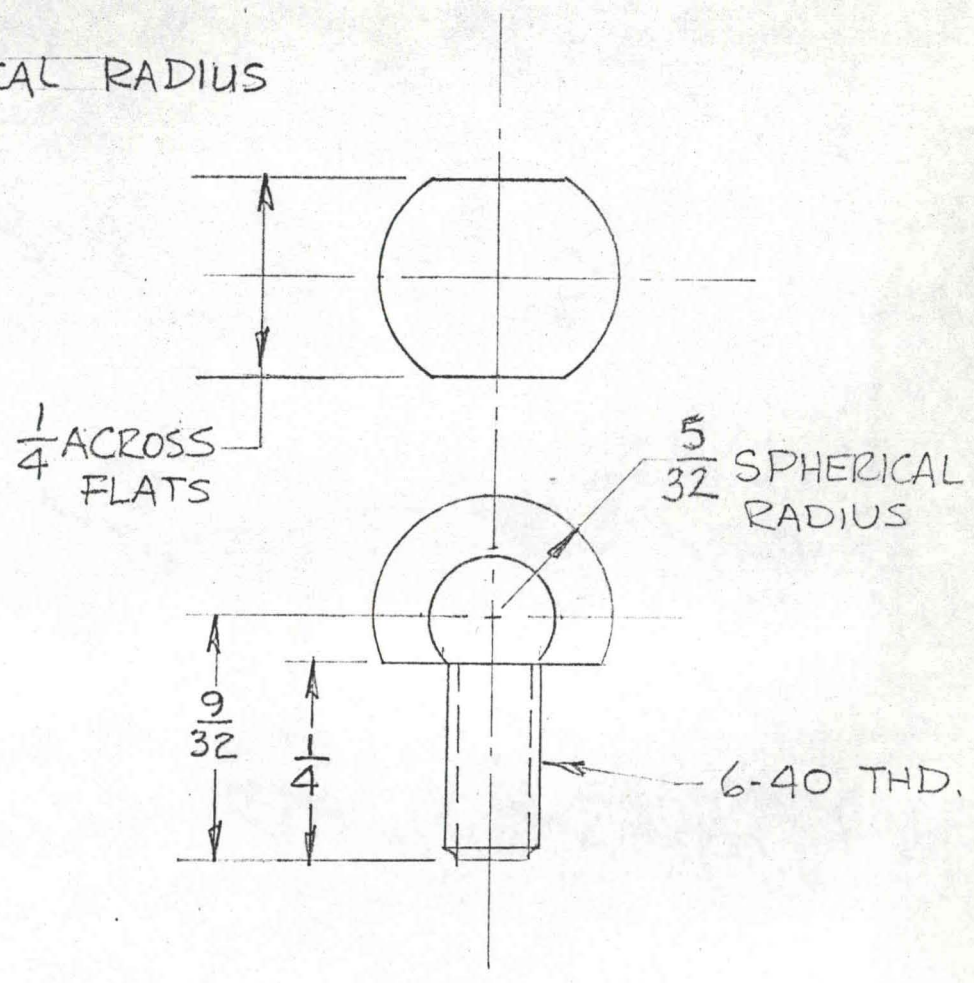
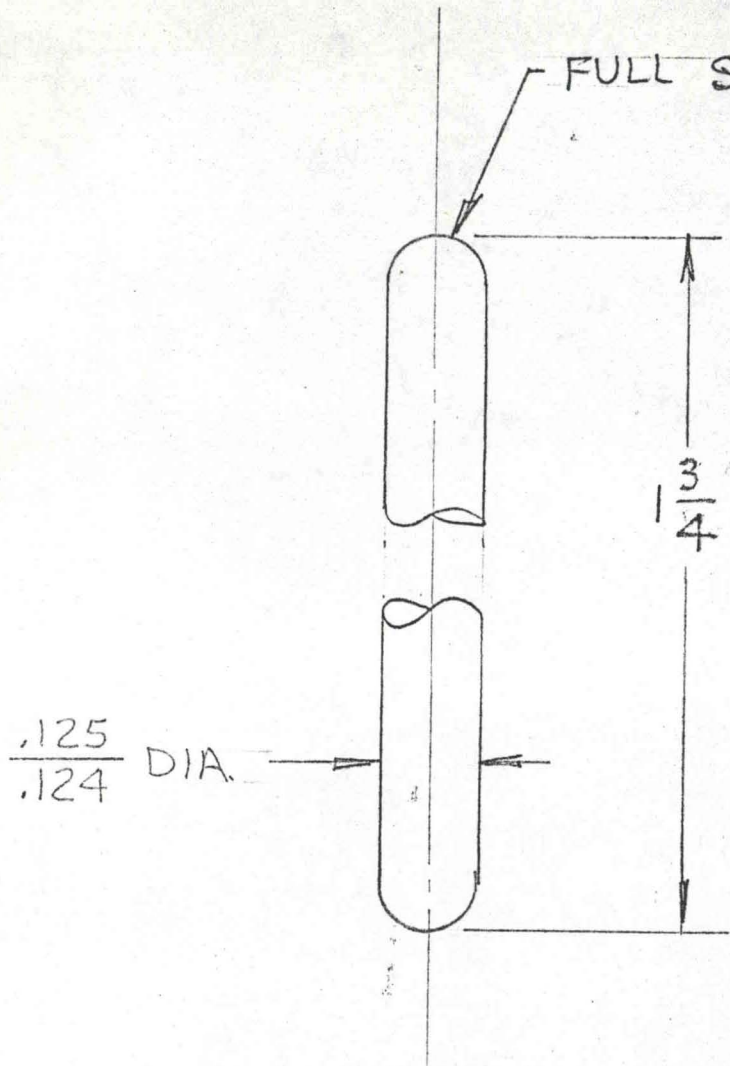


NOTE:
THIS PART TO BE FITTED
TO BASE CYL - PART 4 - WITH
SCREWS AS AVAILABLE

⑤ LEVER BRACKET
STAINLESS STEEL 1 REQ'D
FULL SIZE 6-18-74



⑥ GAGE LEVER 1 REQ'D
 STAINLESS STEEL
 FULL SIZE 6-18-74

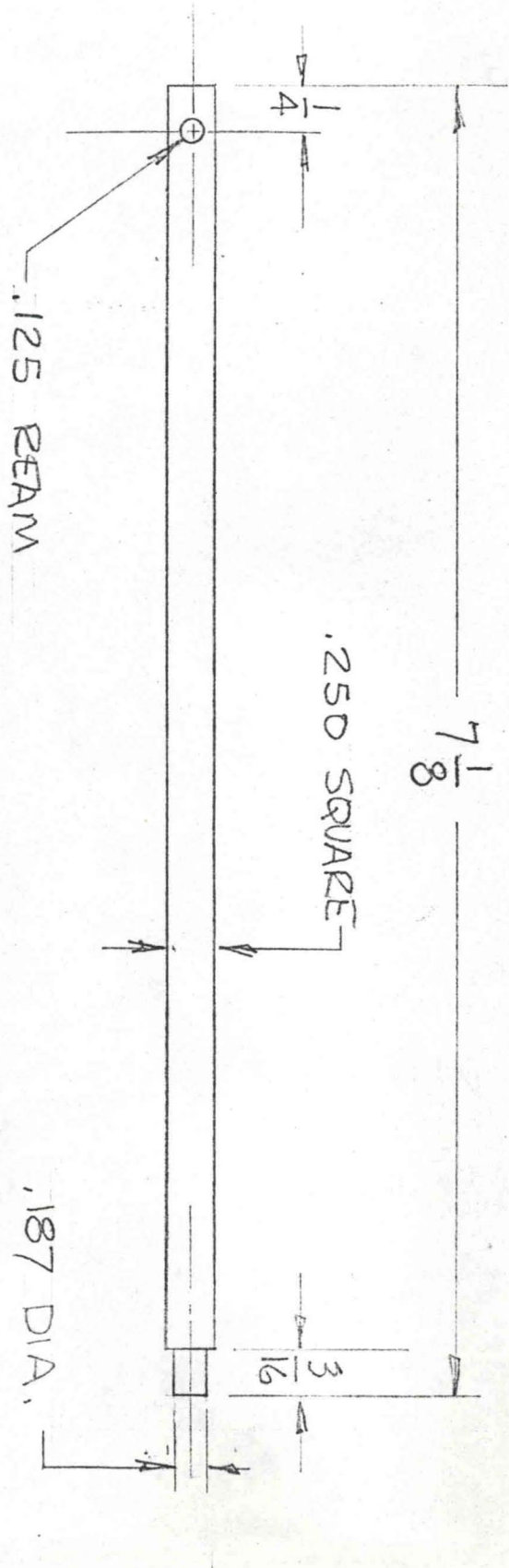


⑧ STYLUS-UPPER 1 REQ'D.
 STAINLESS STEEL
 4 X SIZE

⑦ STYLUS-LOWER 1 REQ'D.
 STAINLESS STEEL
 4 X SIZE

6-21-74

NOTE: PRESS-FIT TO LVDT BRKT.

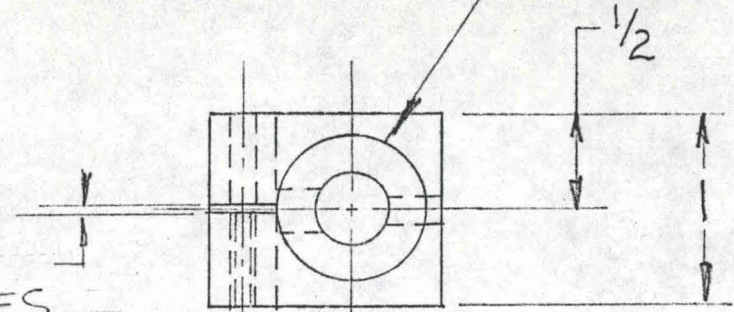


- ⑨ GAGE LEVER-UPPER
STAINLESS STEEL
FULL SIZE
1 REQ'D.
6-21-74

.750 REAM - 3/4 DP.
3/8 DR. THRU.

1/2

1/32 SAW CUT
2 PLACES



3/16

7/16

1/4

6-32 TAP TO
SAW CUT.
.152 RM FROM
OPPOSITE SIDE

3/8

.213 REAM
TO PRESS
FIT SPRING
PIN

1/2

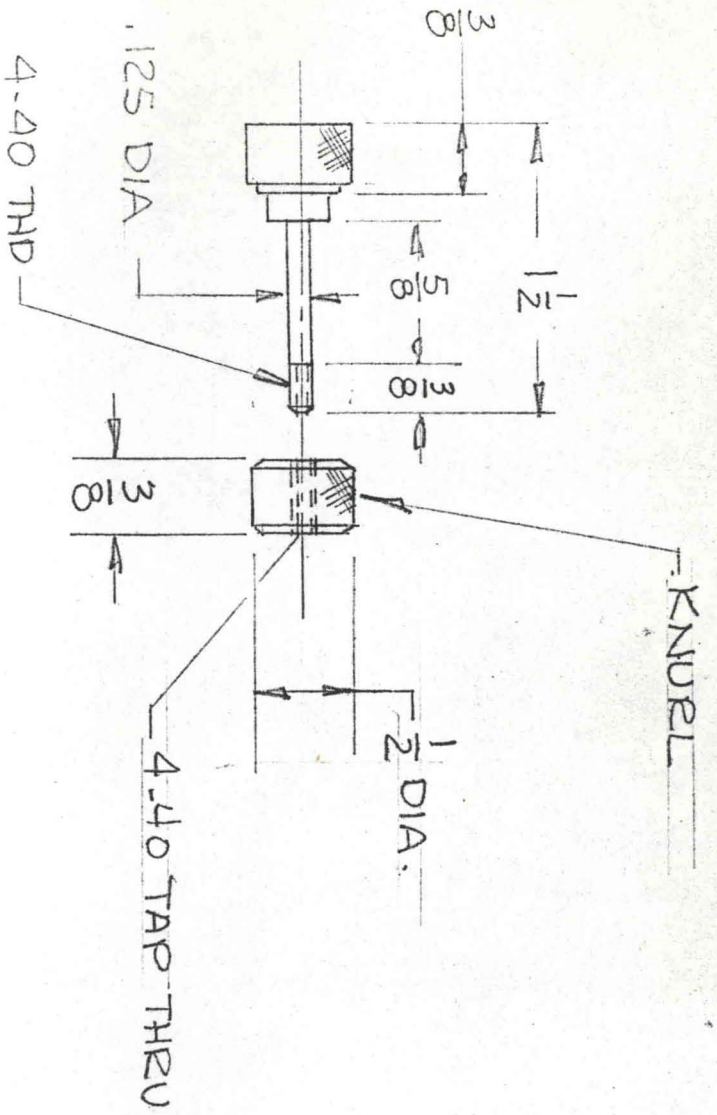
3/8

1/2

1/4

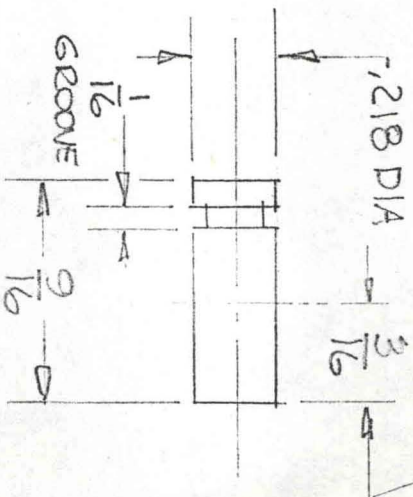
.187 REAM
TO PRESS
FIT GAGE
LEVER

⑩ LVDT BRKT 1 REQ'D
ALUMINUM
FULL SIZE 6-21-74



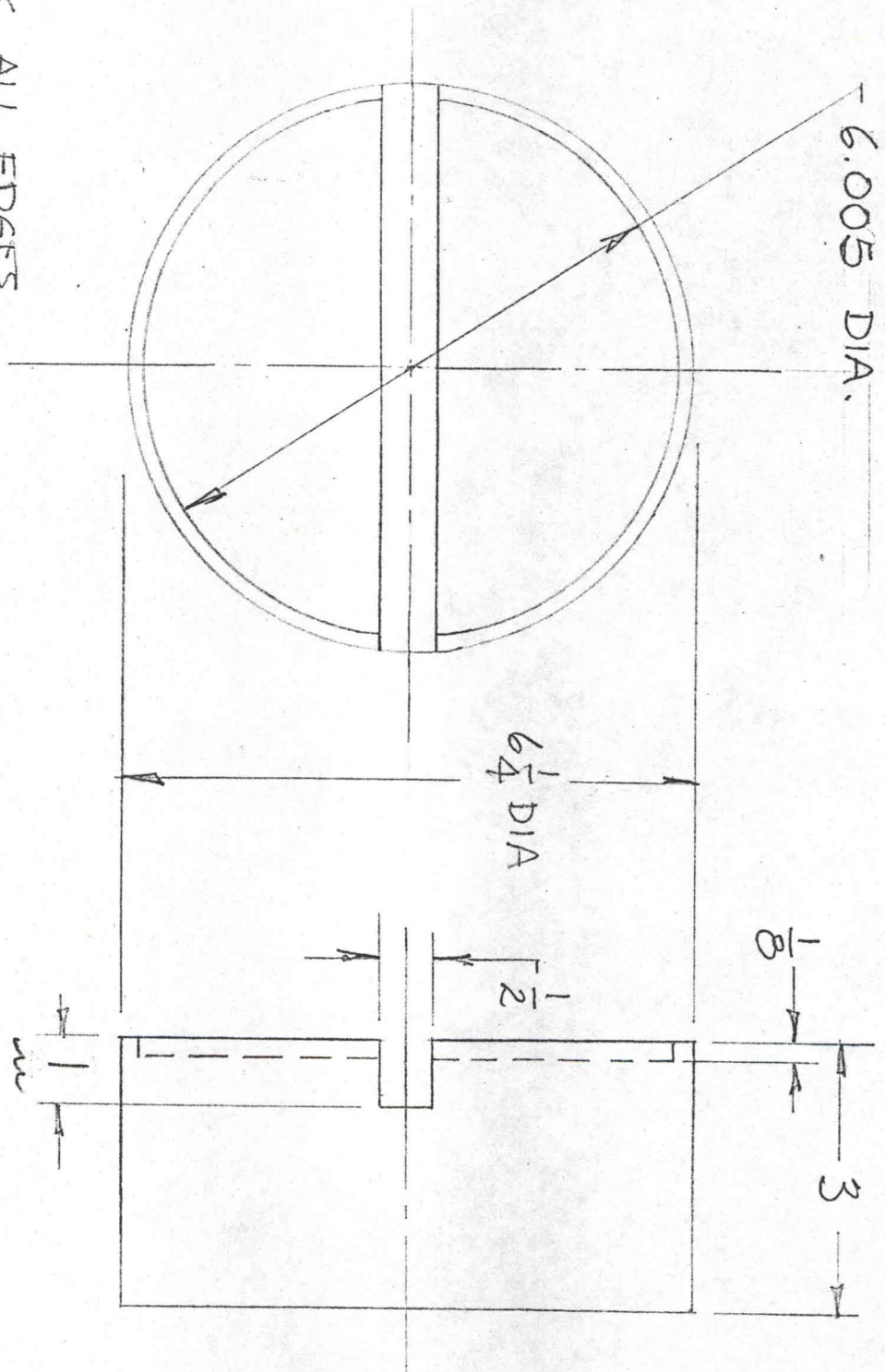
⑫ LEVER PIN ASSY
 STAINLESS STEEL
 FULL SIZE
 1 REQ'D

PRESS TO LVDT
 BRKT THIS LGTH.

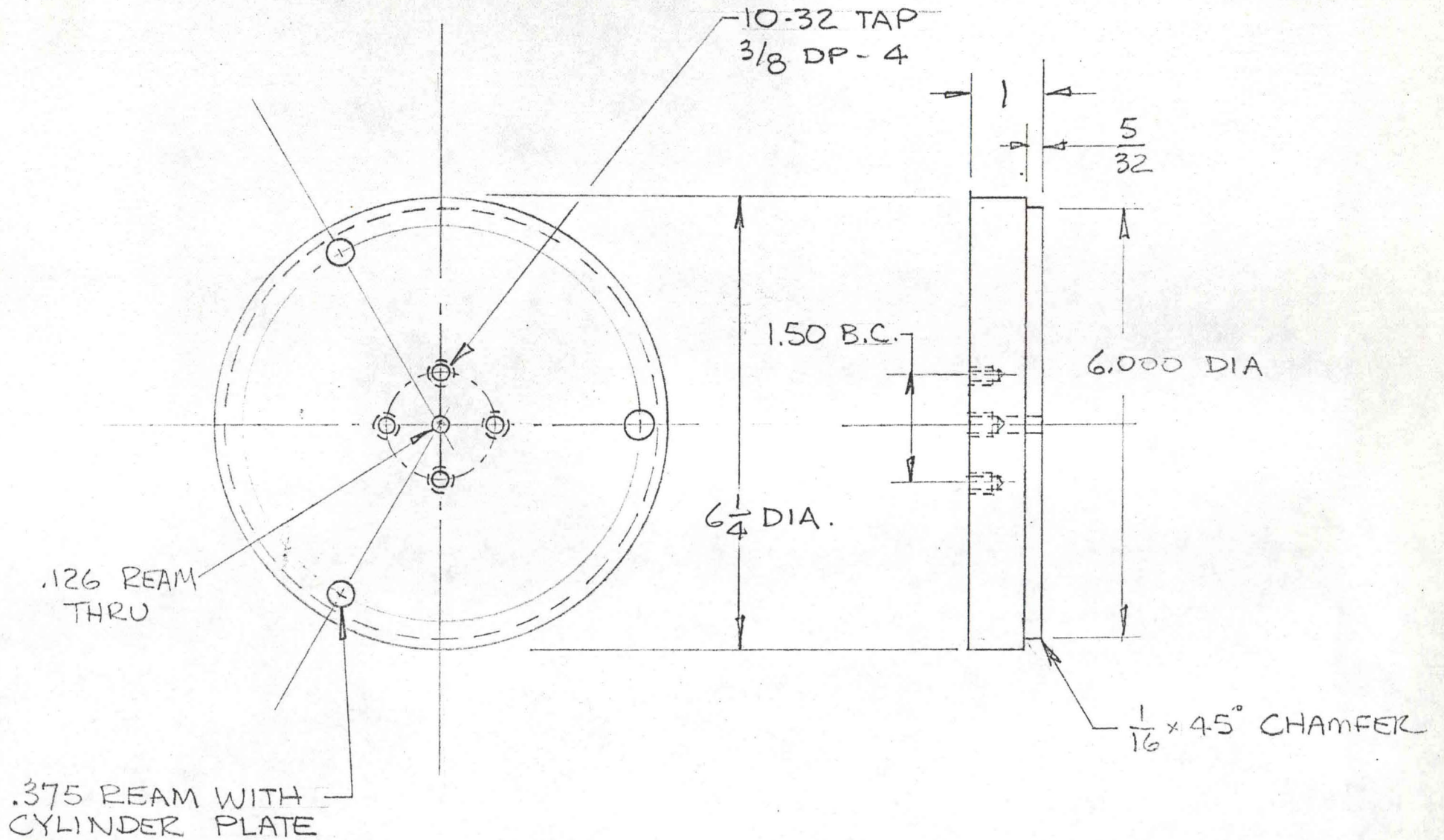


⑪ SPRING PIN
 ALUMINUM
 2 X SIZE
 1 REQ'D
 6-21-74

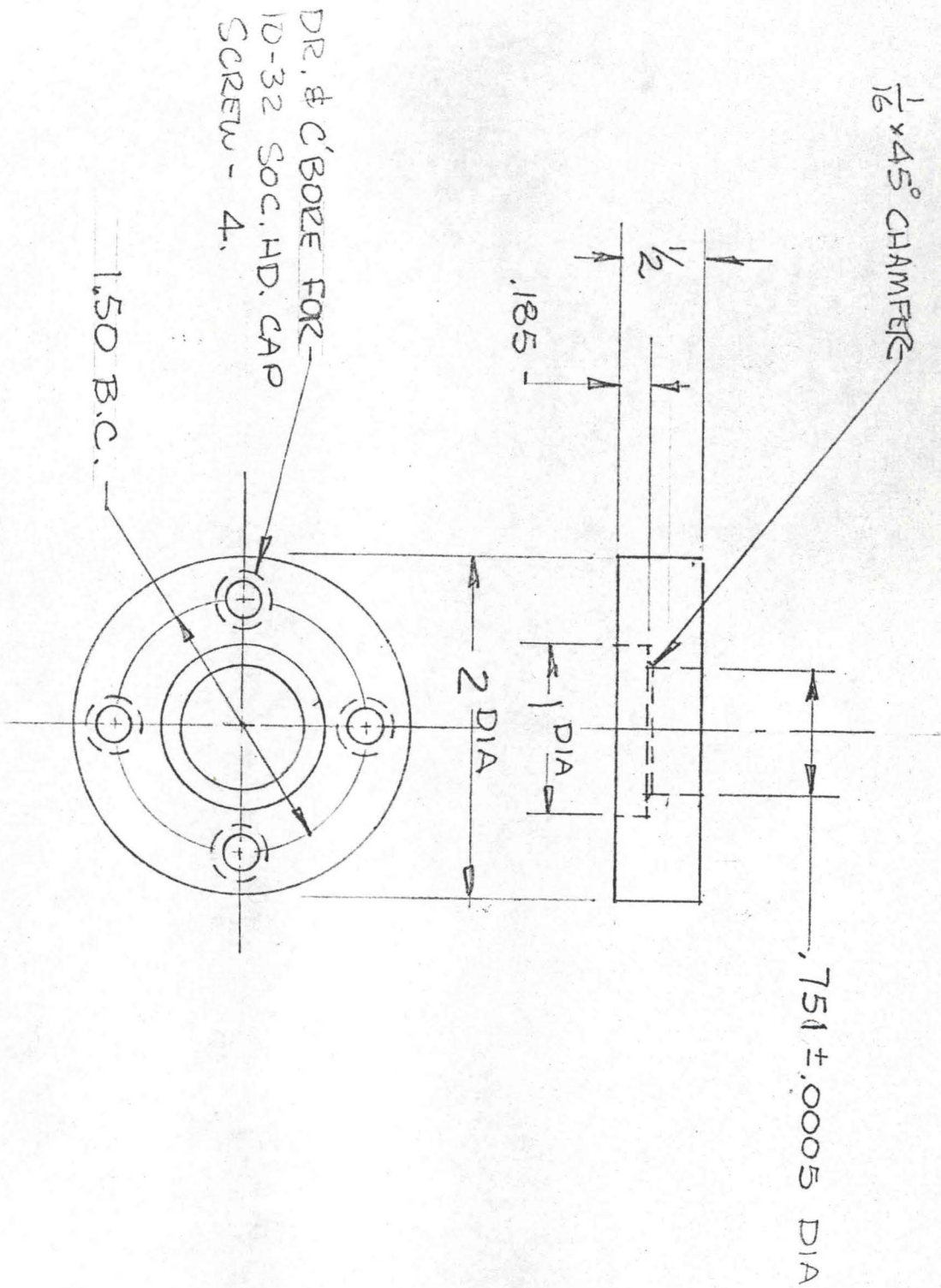
BREAK ALL EDGES
1/32 x 45°



⑬ TOP PLATE 1 REQ'D.
C.R.S. - BLACK OXIDE
HALF SIZE
6-21-74

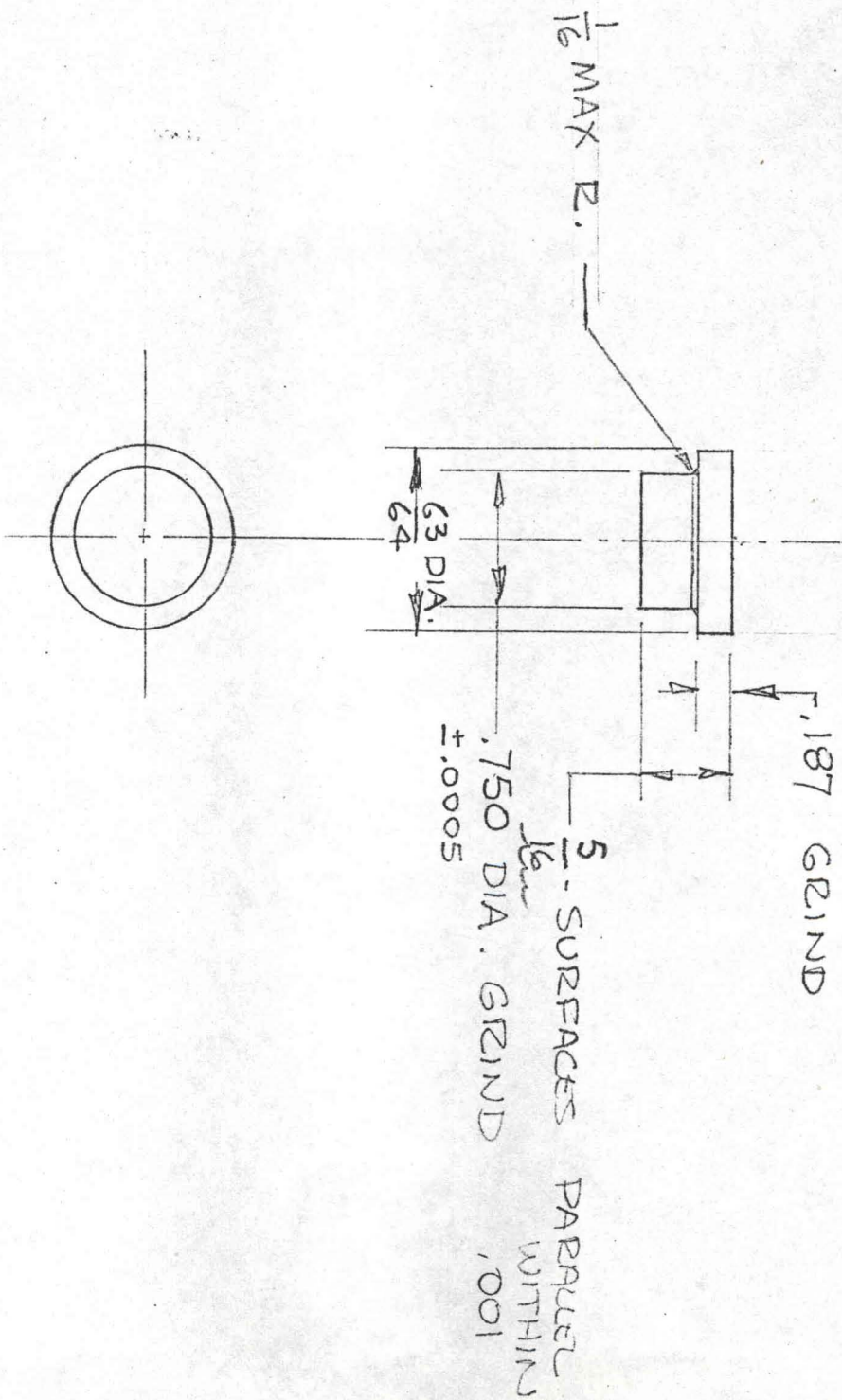


(14) COMPRESSION PLATE 1 REQ'D.
CARBON STEEL - BLK. OXIDE
HALF SIZE 6-21-74

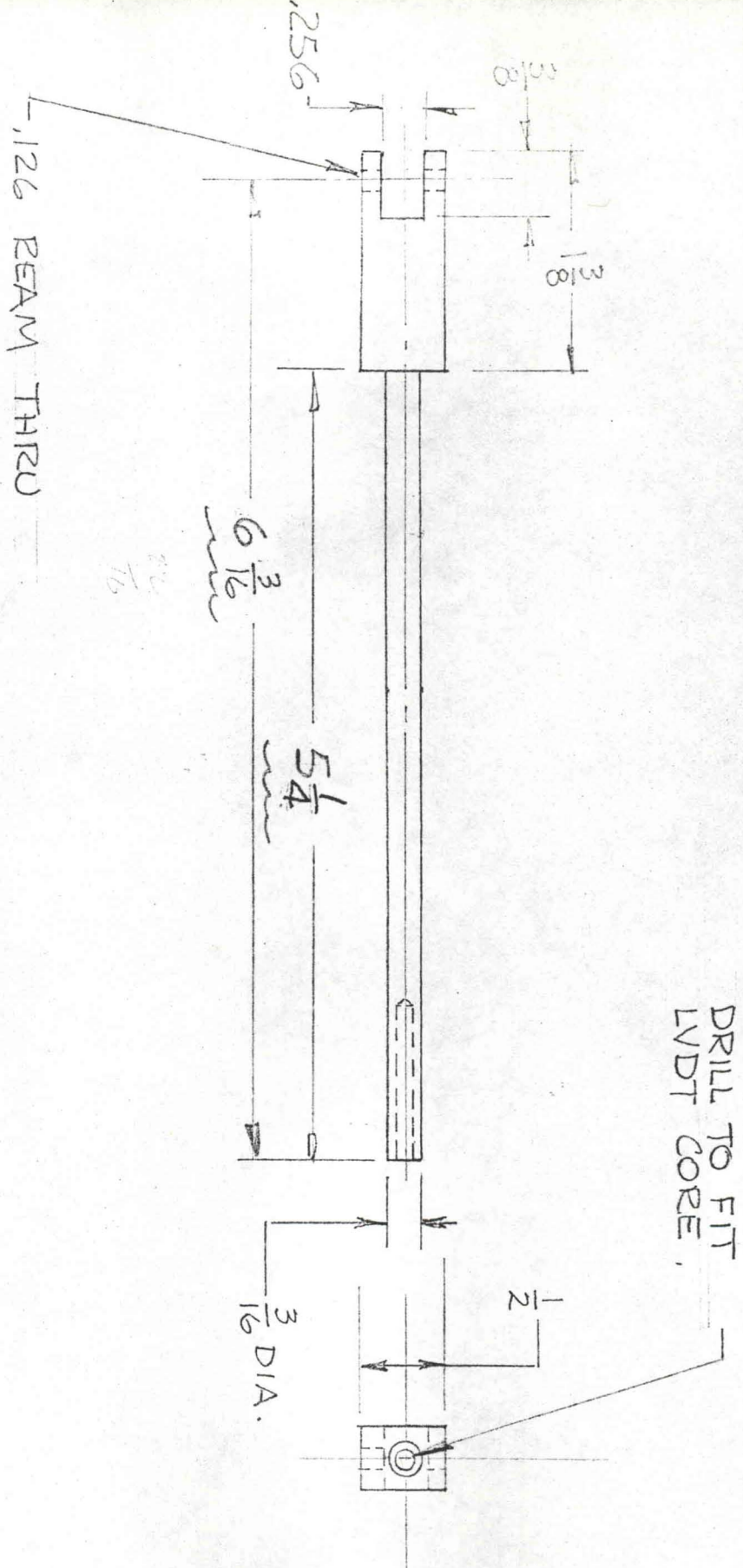


⑮ PAD HOLDER 1 REQ'D
 STAINLESS STL.
 FULL SIZE

6-21-74



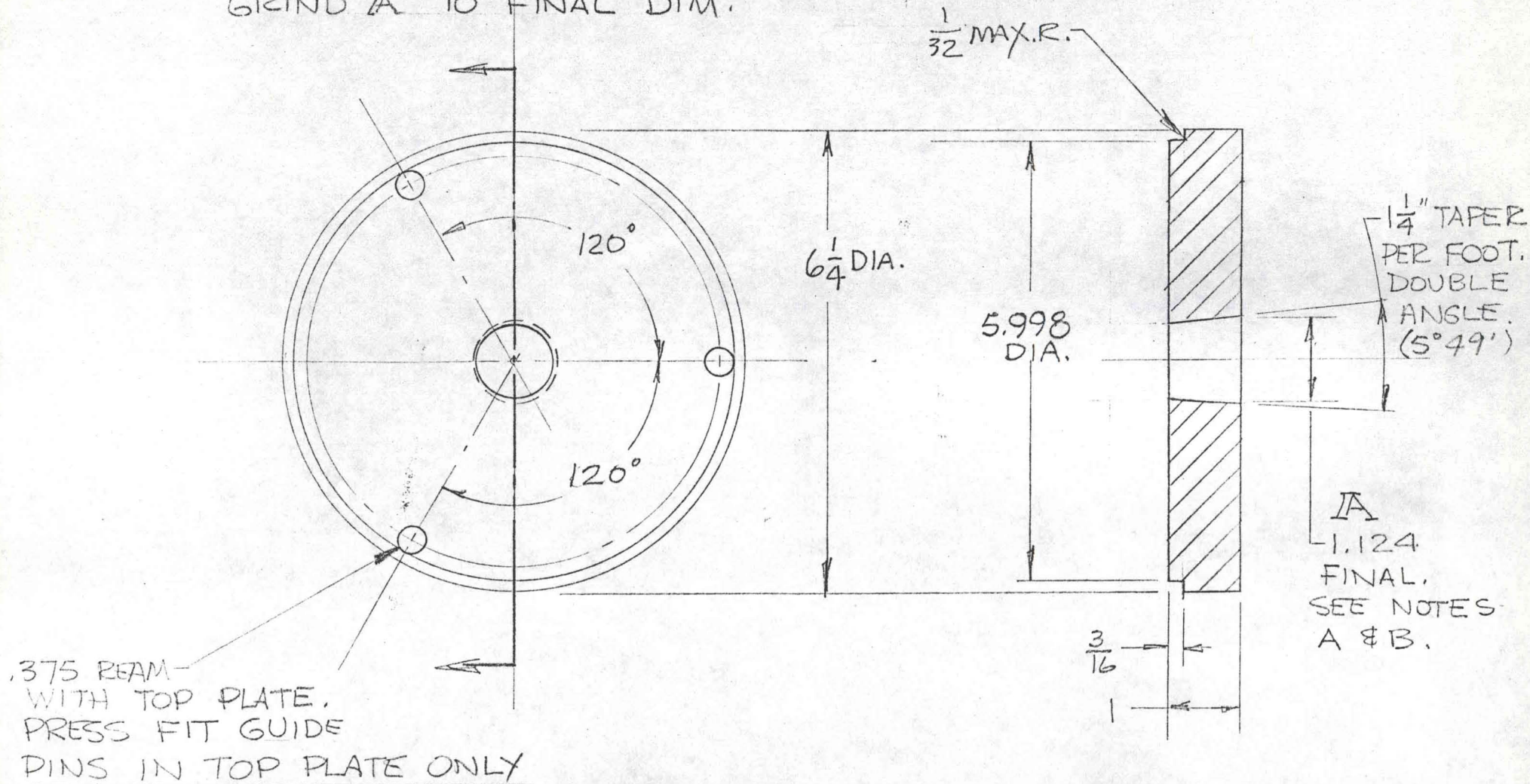
①6 COMPRESSION PAD 1 REQ'D
 SOLAR STEEL 50 R.
 FULL SIZE
 6-21-74



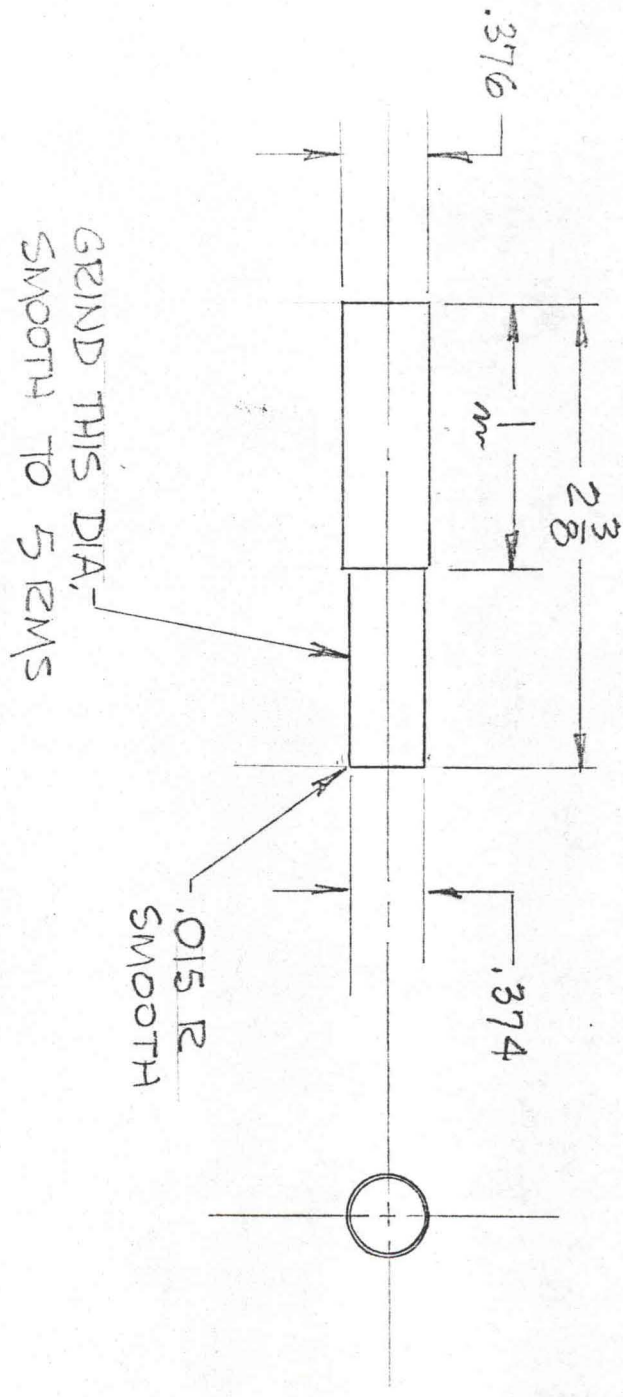
(17) LVDT EXTENSION
 STAINLESS STEEL
 FULL SIZE
 1 REQ'D.
 6-21-74

NOTE A. WATER QUENCH FROM 1550°F
 DRAW TO 600°F, R. 40.
 GRIND \bar{A} TO 1.100

NOTE B. INSERT COLLAR AND
 APPLY 40,000 LBS. FORCE,
 GRIND \bar{A} TO FINAL DIM.

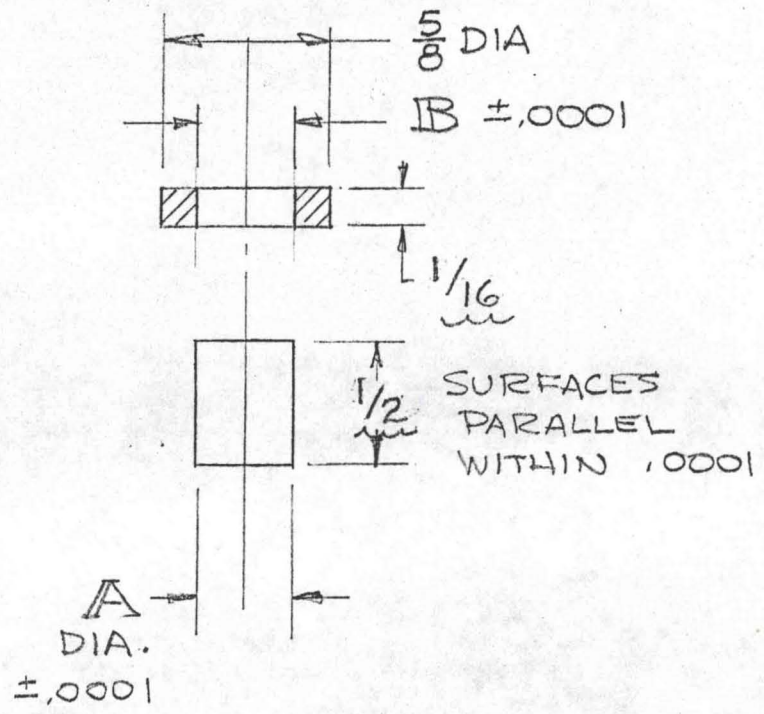


(18) CYLINDER PLATE 1 REQ'D.
 SOLAR STEEL
 HALF SIZE 6-21-74



①9 GUIDE PIN
 SAE 1036
 FULL SIZE

3 REQ'D.
 6-21-74



(21) PLUG RING
 CARBON STEEL-1036
 TWICE SIZE

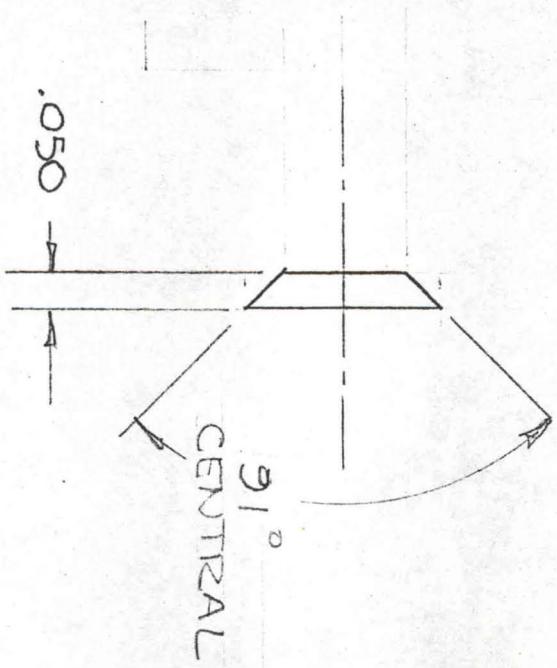
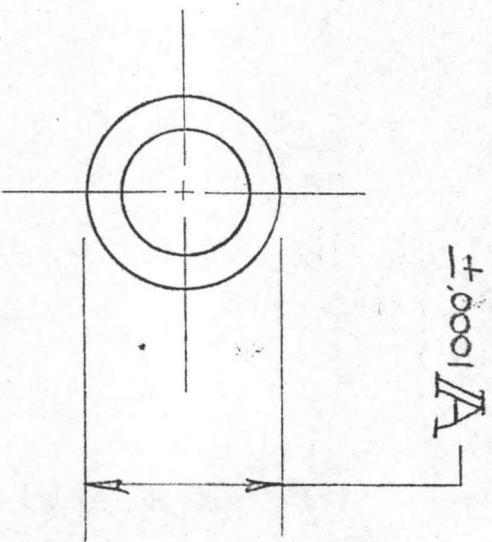
PRESS FIT PLUG RING
 FLUSH WITH TOP OF
 PLUG.

A	IB	REQ'D
.250	.2495	2
.265	.2645	6

(20) PLUG
 901 CARBOLOY OR EQUIV.
 TWICE SIZE

6-21-74

IN.	NO. REQ'D
.265	6
.250	2



22

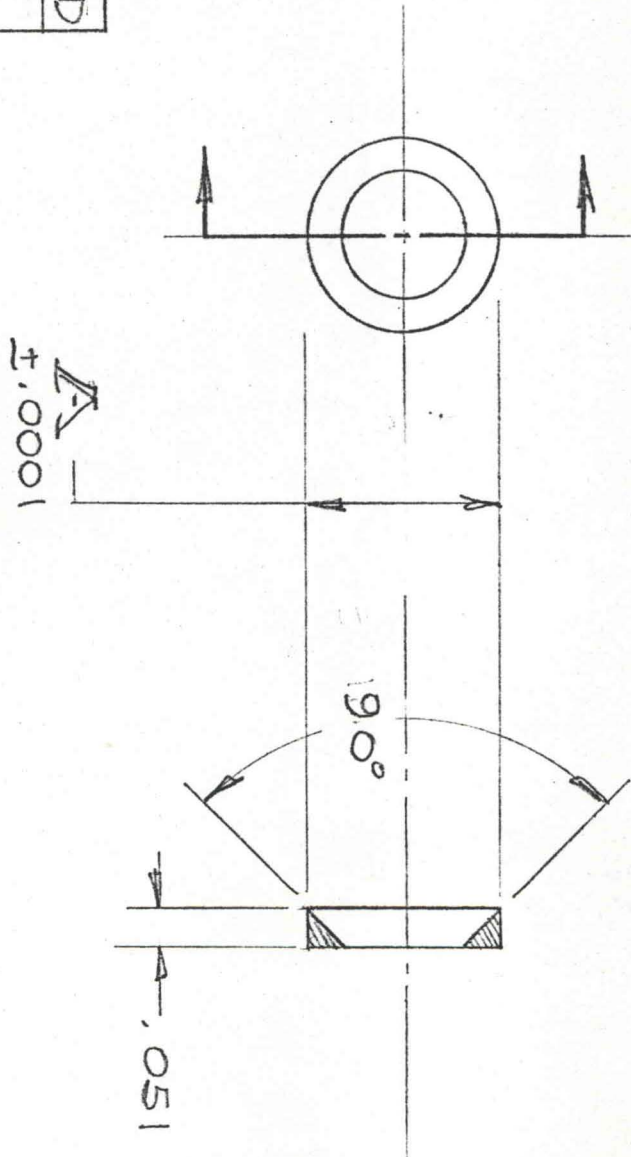
PACKING DISC

SAE 52100
4 X SIZE

65 R_c

6-24-74

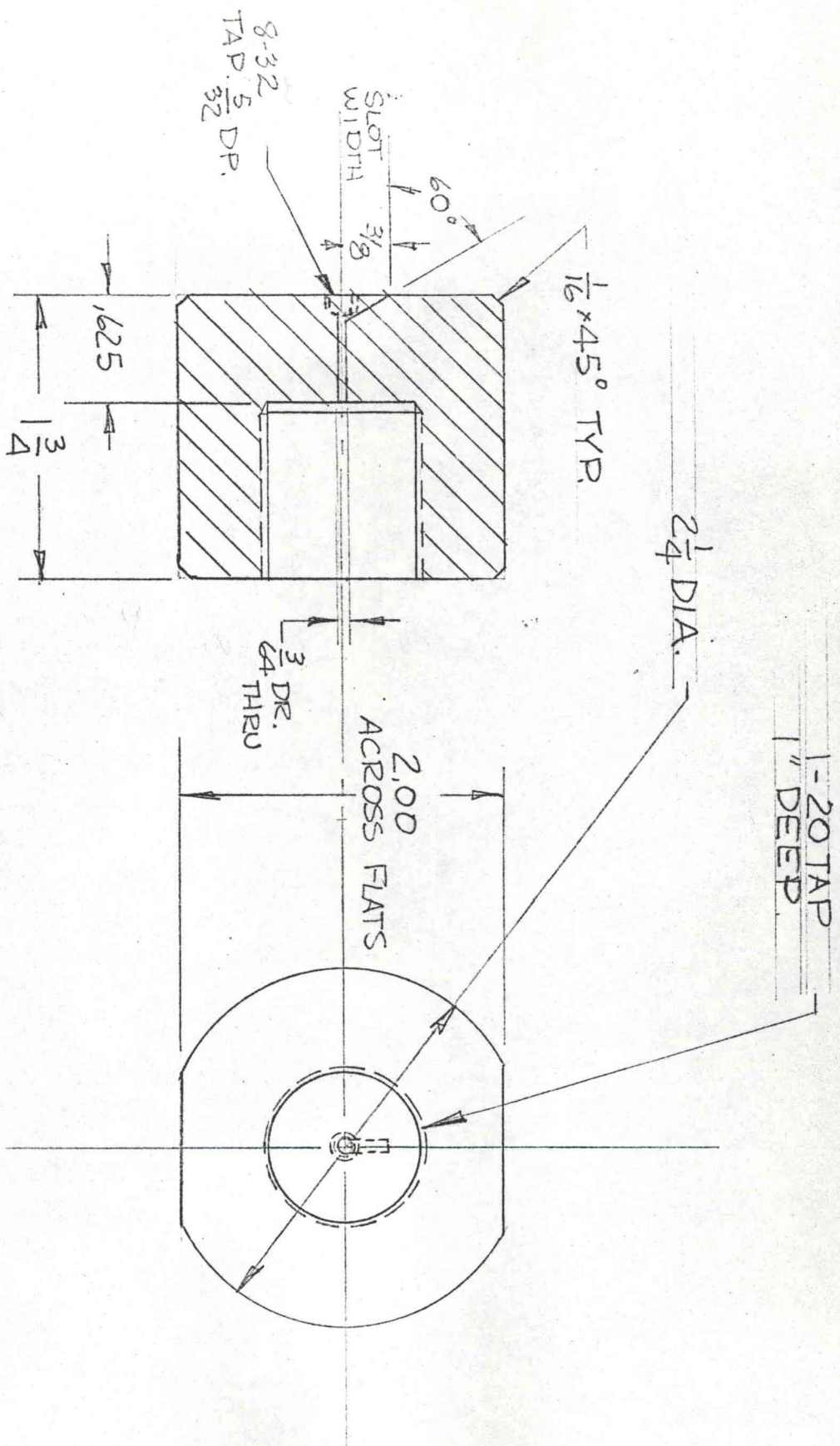
A	NO. REQ'D
.265	12
.250	4



23

PACKING RING

SAE 6150 35 Rc
4 X SIZE 6-24-74



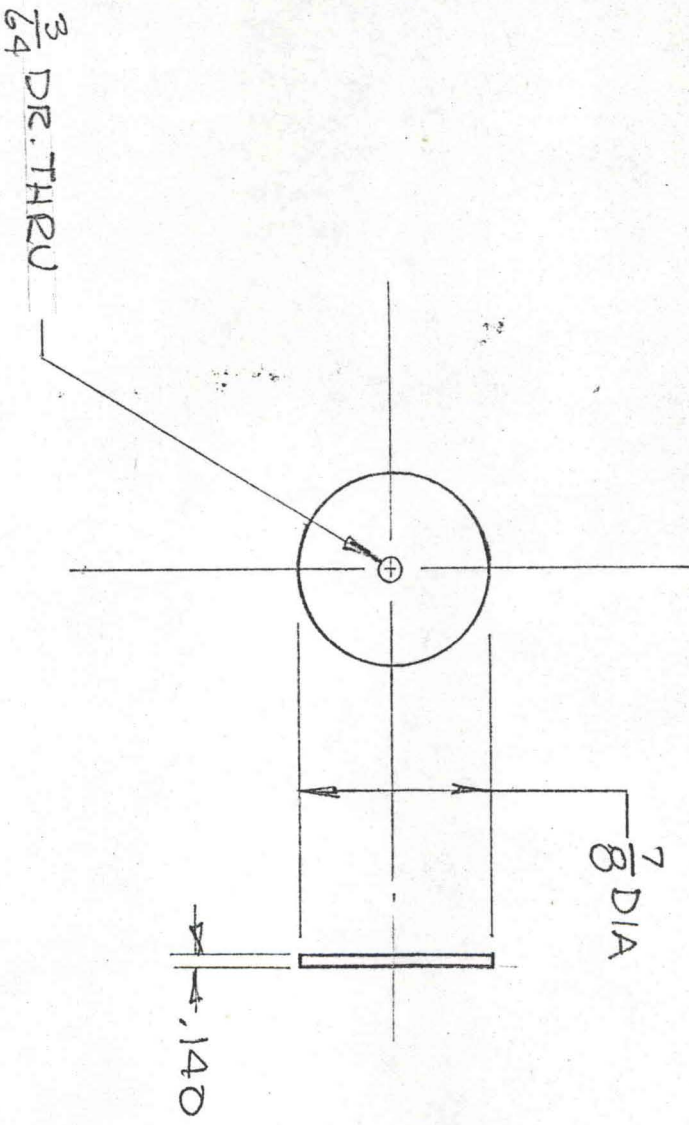
HEAT TREAT TO 1700°F,
 OIL QUENCH & DRAW TO
 800°F.

24

SCREW CAP
 SAE 6150
 FULL SIZE

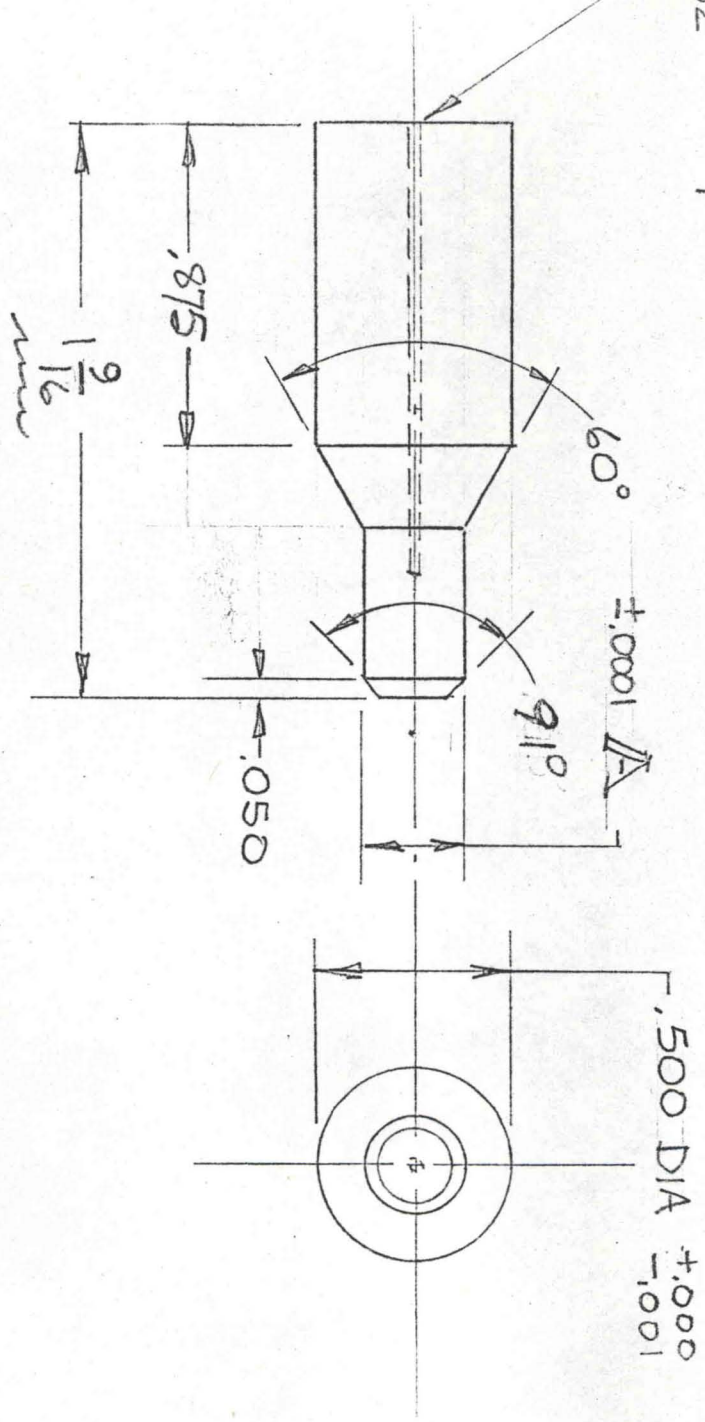
1 RQ'D.

6-24-74



25 SCREW PLUG SPACER 1 REQD.
 SAE 1036 50 P.
 FULL SIZE 6-24-74

$\frac{1}{32}$ DR. $\frac{1}{4}$ DR.



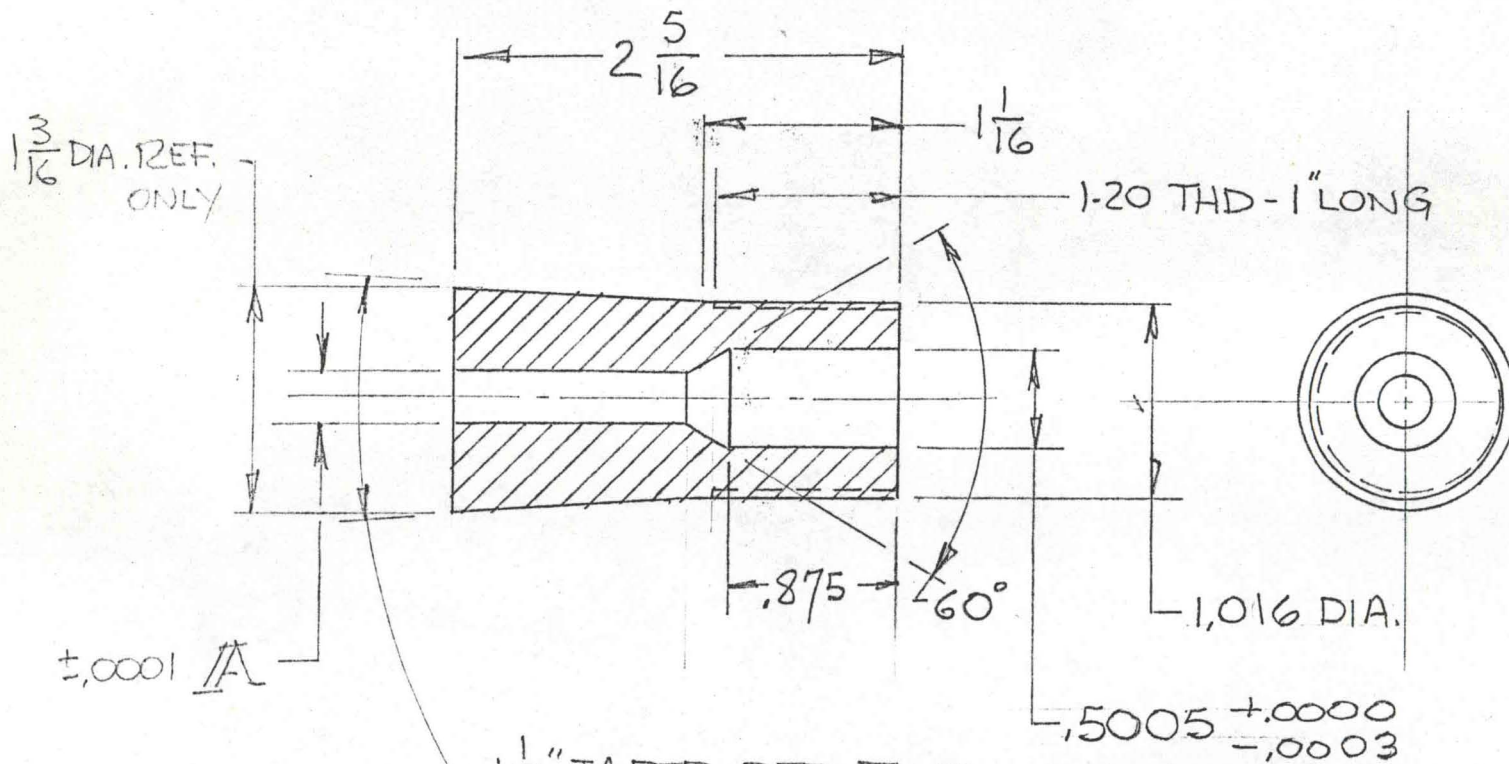
Δ	No	REQD
.250	2	
.265	6	

26

END PLUG
SAE 52100
TWICE SIZE

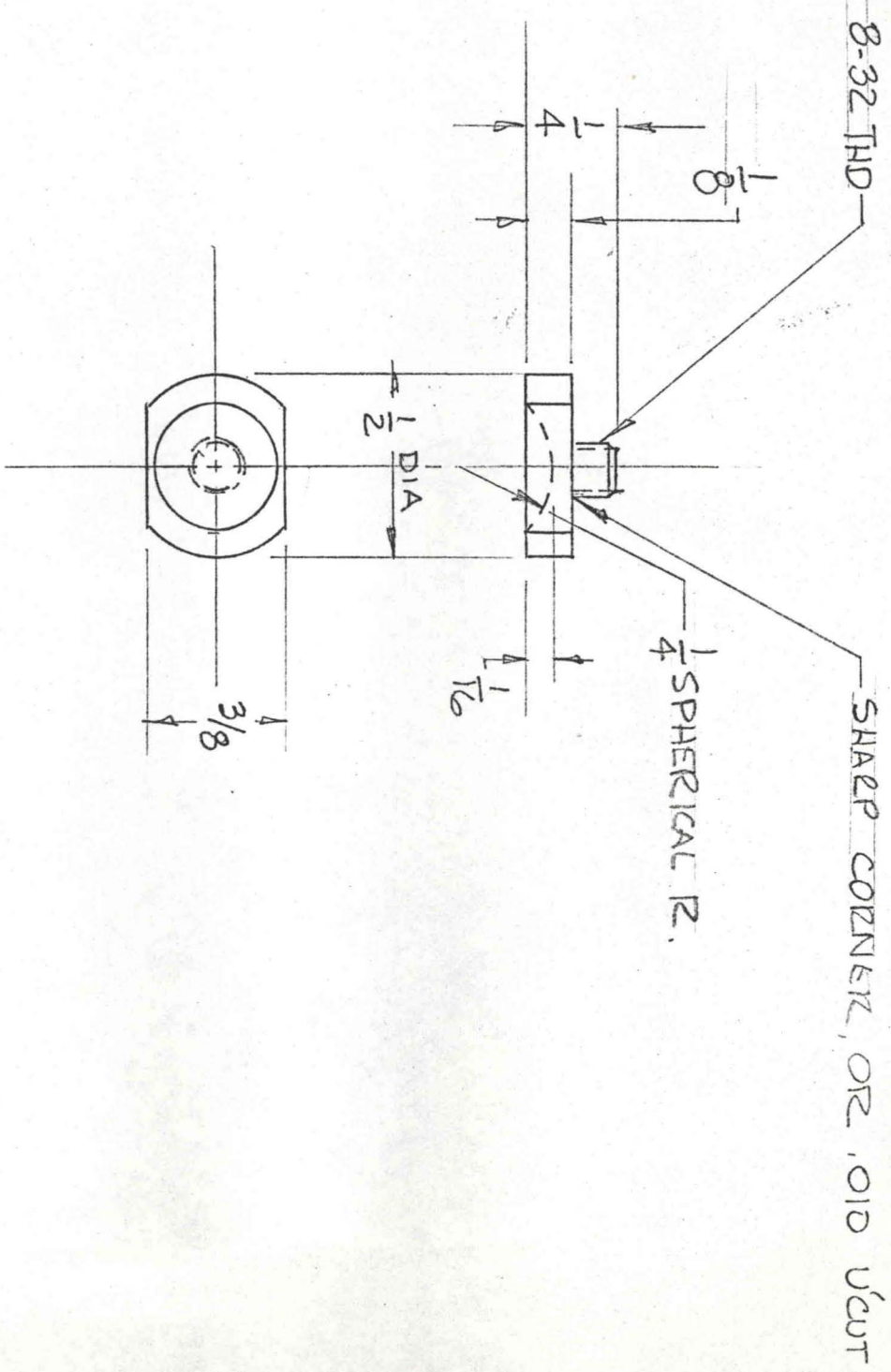
65 R.
6-24-74

HEAT TREAT TO 1550°, WATER
 QUENCH, & TEMPER TO
 52/54 Rc.



A	NO. REQ'D.
.2653	2
.2503	4

(27) STOPPER
 SOLAR STEEL
 FULL SIZE 6-24-74



(28) STYLUS PLATE 1 REQ'D
STAINLESS STEEL
 TWICE SIZE
 6-27-74